

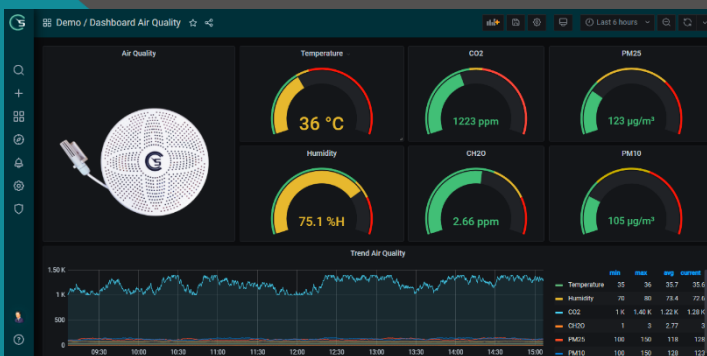
STYRE SENSOR FUEL TANK ULTRASONIC

STYRE Sensor Air Quality is an air environment comprehensive index monitor, developed for detecting PM2.5, PM10, temperature, humidity, air pressure, light, TVOC, O₂, carbon dioxide (CO₂), Carbon monoxide (CO), formaldehyde (CH₂O) and other parameters. The transmitter uses imported sensors and arithmetic chips, with high precision, high resolution and good stability. Widely used in building HVAC, building energy saving, smart home, schools, hospitals, airport stations and other places.



Features:

1. On air quality can detect Temperature, humidity, Particulate matter (PM2.5, PM10), air pressure, light, TVOC, CO₂, formaldehyde, O₃, CO, CH₄, O₂, SO₂, NO₂, H₂, H₂S, NH₃.
2. Unique dual-frequency data collection and automatic calibration technology, consistency can reach $\pm 10\%$
3. Wide range 0-120Kpa air pressure range, can be applied to various altitudes.
4. Adopt special 485 circuit, the communication is stable, and the power supply is within 10 ~ 30V wide voltage range.



TECHNICAL SPECIFICATIONS

| | |
|----------------------------------|---|
| DC Power Supply | DC 10-30V |
| Maximum Power Consumption | 0.5W (24V DC Power Supply) |
| Detection Parameters | Temperature, humidity, PM2.5, PM10, air pressure, light, TVOC, CO2, formaldehyde, O3, CO, CH4, O2, SO2, NO2, H2, H2S, NH3 |
| Working Environment | Temperature -10 °C -55 °C; humidity 0 ~ 95% RH Non-Condensing |
| Signal Output | RS485 Output (Standard Modbus-RTU Protocol) |
| Product Material | ABS |
| Installation method | Wall Hanging, Ceiling |

Note : Specification are subject to change without notice

DETECTION SPECIFICATIONS

| Detection parameters | Range | Resolution | Accuracy | Preheat time |
|----------------------|--------------|------------|---------------------|---|
| PM2.5 | 0~1000ug/m3 | 1ug/m3 | ± 10% | ≤2min |
| PM10 | 0~1000ug/m3 | | | |
| temperature | -40°C~+120°C | 0.1°C | ± 3%RH | |
| humidity | 0%RH-100%RH | 0.1%RH | ± 0.5°C | |
| Atmospheric pressure | 0~120Kpa | 0.1Kpa | ± 0.15Kpa@25°C75Kpa | |
| Illumination | 0~200000Lux | 1Lux | ± 7%(25°C) | |
| TVOC | 0~60000ppb | 1ppb | ± 8%FS± 125ppb | |
| carbon dioxide | 0~5000ppm | 1ppm | ± (40ppm+ 3%F· S) | 2min (available), 10min (maximum accuracy) |
| formaldehyde | 0~5ppm | 0.01ppm | ± 5%FS | ≥5 minutes |
| ozone | 0~10ppm | 0.01ppm | ± 6%FS | ≥5 minutes |
| O2 | 0~25%Vol | 0.1%Vol | ± 3%FS | ≥5 minutes |
| H2S | 0~100ppm | 1ppm | ± 3%FS | ≥5 minutes |
| CH4 | 0~100%LEL | 1%LEL | ± 5%FS | ≥5 minutes |
| CO | 0~1000ppm | 1ppm | ± 3%FS | ≥5 minutes |
| NO2 | 0~20ppm | 0.1ppm | ± 3%FS | ≥5 minutes |
| SO2 | 0~20ppm | 0.1ppm | ± 3%FS | ≥5 minutes |
| H2 | 0~1000ppm | 1ppm | ± 3%FS | ≥5 minutes |
| NH3 | 0~100ppm | 1ppm | ± 2%FS | ≥5 minutes |

Note : Specification are subject to change without notice

Provided and Supported By



PT. OTKA TEKNO ADITAMA, now & tomorrow partner

Setiabudi 2 Building 2nd floor Suite 207 B-C | Jalan H.R. Rasuna Said Kav. 62 – Kuningan | Jakarta Selatan – 12920

Phone. +62 (21) 52900828 | Fax. +62 (21) 52971875

Email. info@otka.co.id | Website. <http://www.otka.co.id>



otka.co.id



@otkatech



@otkatechnology



@otkatechnology



@otkatechnology