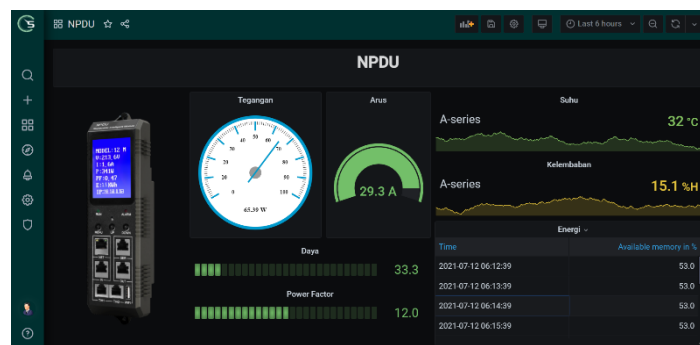




STYRE NPDU

STYRE NPDU was created to meet the latest Data Center monitoring standards that include real time communication technology, power distribution to electric metering and environment sensor that are always connected.



KEY FEATURES



Electricity Monitoring

Real time monitoring for power and electricity at each output socket well on individual or whole



Stand by Sensor

Temperature, humidity, smoke and server rack doors



Flexible Output

Output socket can be used along client needs



TECHNICAL SPECIFICATIONS

Realtime Monitoring

Total	Total load current, Power Factor, Set total voltage threshold
Output	Output current, Clear output power (kWh)
Sensor	Temperature and Humidity state
Device	Local alarm, LCD Display, Set the work node
Network	IPV4, HTTP/HTTPS, SMTP, ModBus, Wifi Ready, Daisy Chain Ready

Alarm

User Defined Alarm	Set output unit alarm, set total voltage alarm
System Default Alarm	When overload occurs, undervoltage or overvoltage alarm
Alarm method	SNMP sends trap alarm information

Accessing Method

Web based
SNMP (V1/V2C/V3)
Telnet
Radius

Central Management

Sensor Management Authority
Device Management Authority
User Management Authority
Log Management Authority

Log Record

Record and save the operating and alert information, graphic record of electric parameters and environment which can be exported
--

Note : Specification are subject to change without notice

