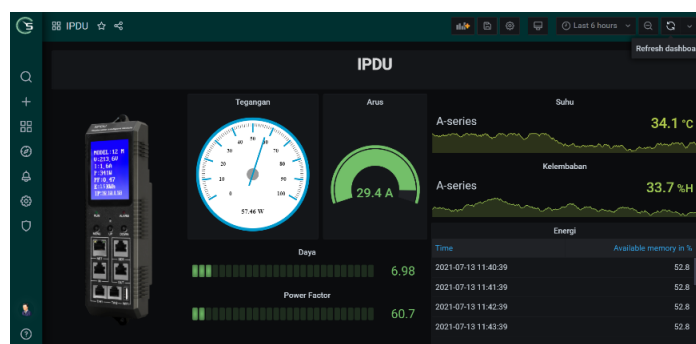




# STYRE IPDU

STYRE IPDU was created to meet the latest Data Center monitoring standards that include real time communication technology, power distribution to electric metering and environment sensor that are always connected.



## KEY FEATURES



### Electricity Monitoring

Real time monitoring for power and electricity at each output socket well on individual or whole



### Stand by Sensor

Temperature, humidity, smoke and server rack doors



### Flexible Output

- Output socket can be used along client needs
- Can monitor the total usage from all output socket



# TECHNICAL SPECIFICATIONS

## Input / Output

1 Input	Rated input voltage	380 V ~ 50/60Hz				
	Input terminal type	IEC60309 32A PLUG				
	Cable specification	3G x 6 mm <sup>2</sup>				
	Cable length	2 m				
	The max input current	32 A				
2 Output	Socket	IEC60320/C19	Rated current	16 A	Outlet	6
	Socket	IEC60320/C13	Rated current	10 A	Outlet	30
	Rated output voltage	380 VAC				
Dimension	Product size	L x W x H = 1427 mm x 66.6 mm x 44.5 mm				

## Optional Fittings

User Defined Alarm	Set output unit alarm, set total voltage alarm
System Default Alarm	When overload occurs, undervoltage or overvoltage alarm
Alarm method	SNMP sends trap alarm information

## Accessing Method

Web based
SNMP (V1/V2C/V3)
Telnet
Radius

## Central Management

Sensor Management Authority
Device Management Authority
User Management Authority
Log Management Authority

## Log Record

Record and save the operating and alert information, graphic record of electric parameters and environment which can be exported
--

Note : Specification are subject to change without notice

