

INTELLIGENT CABINET

As your data center becomes more complex, the need for cohesive space management increases. That process begins with a focus on the data center IP based cabinet and gaining an understanding of how the subsystems in the cabinet from an ecosystem to support Information and Communications Technology (ICT) equipment.

Monitoring Function/Features:

- Ready monitoring environment on Temperature & Humidity, Waterleak and Smoke
- Ready monitoring safety on Door close/open status
- Ready monitoring electrical on Current, Voltage, Power
- Ready "easy control touch panel screen display"
- Finger print front door lock (Optional)
- Protocol support modbus tcp, snmp, mqtt
- Connection ethernet/RJ45

Digital Meter



Electricity source in server rack for server and other device needs and Monitor the temperature and humidity in a server rack.

LCD Display Panel

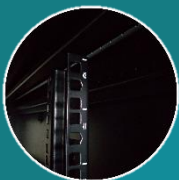


7" inch Touch Panel display that provides easy access to all information

Safety



This key is made of stainless and the quality of the key is also not easily bent. Finger Print Lock Door support



The rack server has a Up to Height 42U, Width 800mm, Depth 1200

TECHNICAL SPECIFICATIONS

CABINET		
Material	SPCC cold rolled steel	
Thickness	Mounting profile 2.0 mm	
	Others 1.2 mm	
Capacity	Maximum loading 1300kgs	
Standard Collocation	1 pc vented mesh front door with small round lock (space for display 7 inch)	
	1 pc double open perforated door with handle lock	
	2 sets sectional side panel	
	4 pcs mounting profile	
	6 pcs mounting angle	
	No fan tray	
	Have more space cable entry on the top and bottom, and the entrance is adjustable	
	4 pcs castor, 2 castor with lock	
	4 pcs M10 adjustable feet	
Dimension	Height	Up to 42U floor standing cabinet
	Depth	Up to 1200 mm
	Width	Up to 800 mm
POWER OUTLET 1 + 1		
Input	Rated input voltage	380 V -50/60 Hz
	Cable specification	3G x 6 mm ²
	Cable length	Max 2 m
	The max input current	32A
Output	Socket	Custom output socket
	Outlet	Up to 2 x 24
	Rated output voltage	380 VAC
Display Properties		LCD – Digital Meter
Installation Method		Vertical fixed installation rear left and right
LCD		
Size and Backlight Type		7 Inchi - LED
Touchscreen		Industry level 4 wire resistance
SAFETY		
Door Lock System	Key Spring Lock	
	Biometric Finger Print (Optional)	
MONITORING FUNCTION		
Environment		Temperature/Humidity, Waterleak, Smoke
Safety		Door Status (Open/Close)
Electrical		Current, Voltage, Power
Protocol		ModBus TCP, SNMP, MQTT
Connection		Ethernet/RJ45

Note : Specification are subject to change without notice

Provided and Supported By



PT. OTKA TEKNO ADITAMA, now & tomorrow partner

Setiabudi 2 Building 2nd floor Suite 207 B-C | Jalan H.R. Rasuna Said Kav. 62 - Kuningan | Jakarta Selatan - 12920

Phone. +62 (21) 52900828 | Fax. +62 (21) 52971875

Email. info@otka.co.id | Website. <http://www.otka.co.id>



otka.co.id



@otkatech



@otkatechnology



@otkatechnology



@otkatechnology